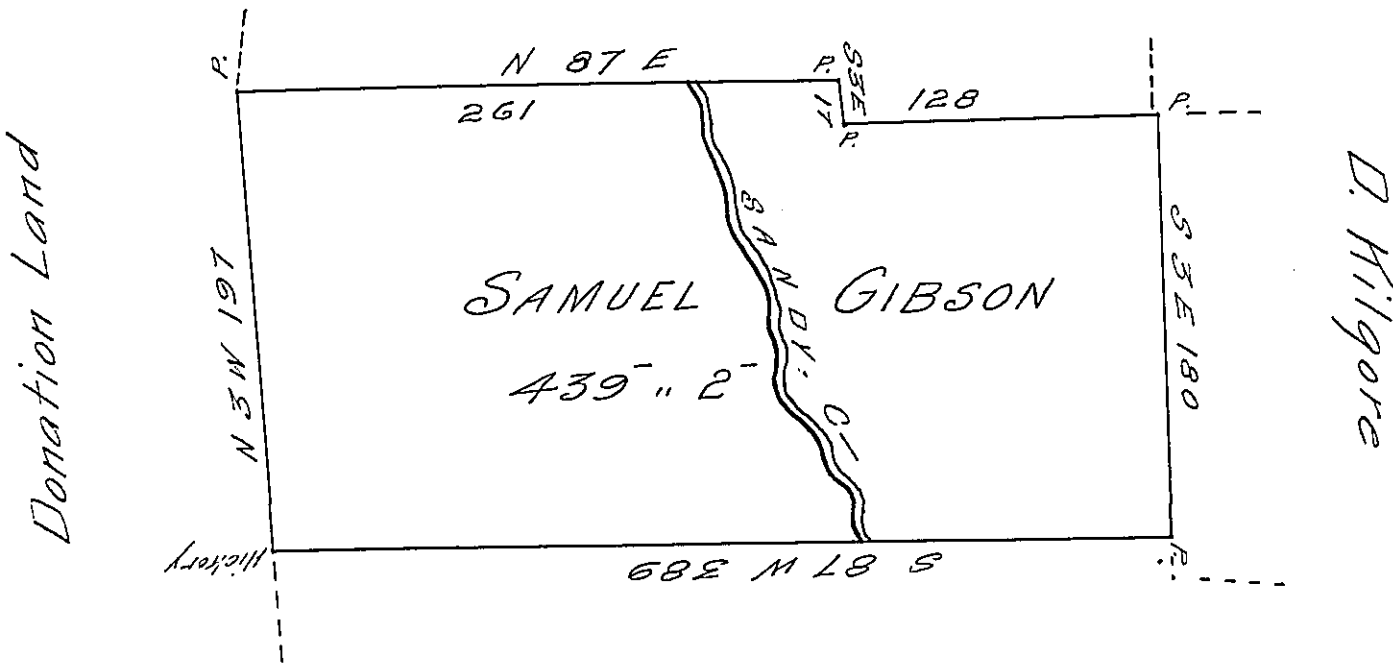


Charles Gibson



ACCOUNT LAND

Situate on Sandy Creek in District No. 3  
 Allegany County containing four hundred  
 thirty nine acres two perches and allowance;  
 Survey'd 11 June 1800 on actual Settlement  
 made by Sam. Gibson 1 November 1796

Ben Stokely D.S.

\_\_\_\_\_  
 Surveyor General  
 of  
 Pennsylvania

IN TESTIMONY that the above is a copy of the original remaining on file in  
 the Department of Internal Affairs of Pennsylvania, made  
 conformably to an Act of Assembly approved the 16th day of  
 February, 1833, I have hereunto set my Hand and caused  
 the Seal of said Department to be affixed at Harrisburg,  
 this thirty-first day of August 1906

*Leach D. Brown*  
 Secretary of Internal Affairs.